

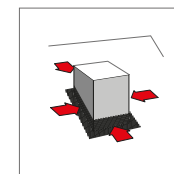
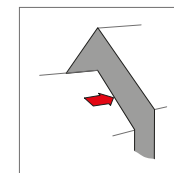
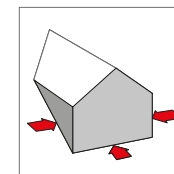
Klöber Benelux Sprl
Rue Mitoyenne, 23
4837 Baelen
Benelux
Tel. +32 (0)87/56 10 56
Fax +32 (0)87/56 12 56
www.kloeber.be
info@kloeber.be

HPI - CZ spol. s r.o.,
Kotrčova 306
503 01 Hradec Králové
Czech Republic
Tel. +420 (0)495 800 912
Fax +420 (0)495 217 290
www.hpi-cz.cz
info@hpi-cz.cz

Klöber GmbH
Scharpenberger Str. 72-90
58256 Ennepetal
Germany
Tel. +49 (0)23 33/98 77-0
Fax +49 (0)23 33/98 77-199
Technische Hotline +49 (0)23 33/98 77-164
www.kloeber.de
info@kloeber.de

Klöber - HPI France Sàrl
Z.I. - 6, rue de l'Énergie
67720 HOERDT
France
Tel.: +33 (0) 388 68 20 60
Fax: +33 (0) 388 68 18 10
www.kloeber-hpi.fr
info@kloeber-hpi.fr

Klöber Ltd
Unit 6F
East Midlands Distribution Centre
Short Lane
Castle Donington
Derbyshire, DE74 2HA
UK
Tel: +44 (0)1332 813 050
Fax: +44 (0)1332 814 033
www.klober.co.uk
info@klober.co.uk



Easy-Form® plus Universal Flashing / Universelles Anschlussband

CONNECTION / ANSCHLÜSSE

Installation instructions for

Verlegeanleitung für

KW 4250

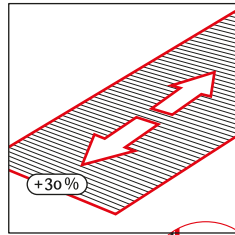
KW 4300

KW 4450

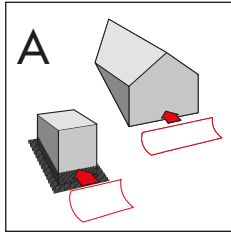
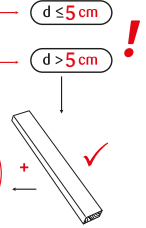
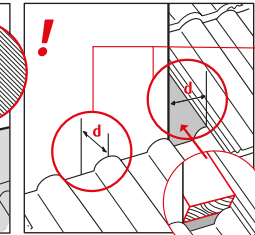
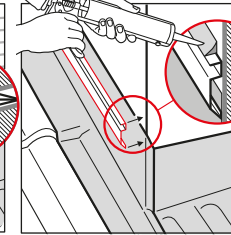
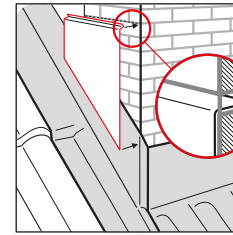
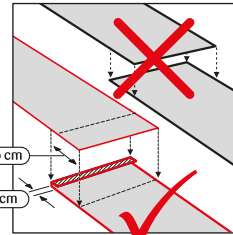
KLÖBER

KLÖBER

Easy-Form® plus
 Universal Flashing /
 Universelles
 Anschlussband



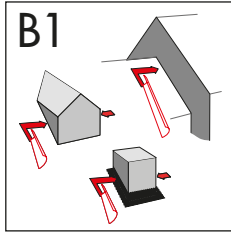
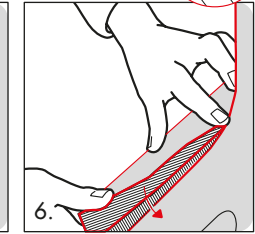
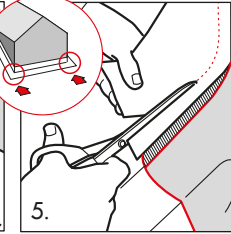
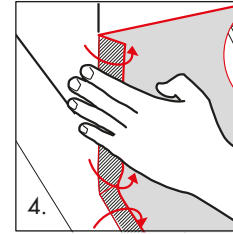
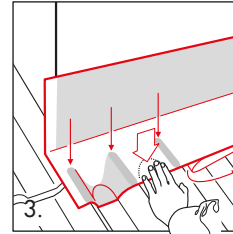
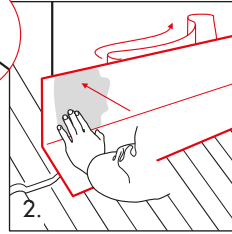
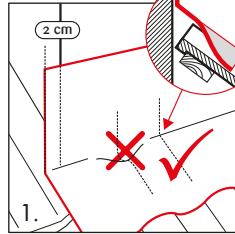
[mm]			
W	w ₁	w ₂	
250	120	130	
300	130	170	
450	170	280	



!

a b

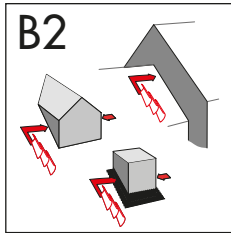
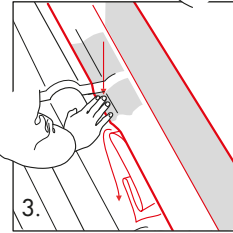
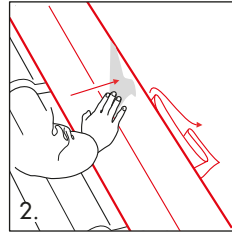
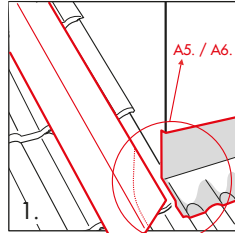
$\alpha \geq 22^\circ$	$\geq 100 \text{ mm}$	$\geq 80 \text{ mm}$
$\alpha < 22^\circ$	$\geq 150 \text{ mm}$	$\geq 100 \text{ mm}$
$\alpha < 15^\circ$	$\geq 200 \text{ mm}$	$\geq 100 \text{ mm}$
$\alpha \geq 10^\circ$	$\geq 200 \text{ mm}$	$\geq 150 \text{ mm}$



!

$a > c$

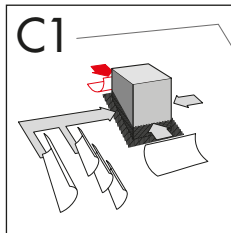
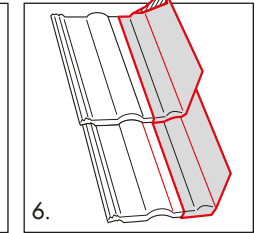
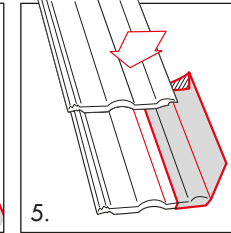
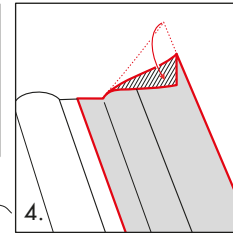
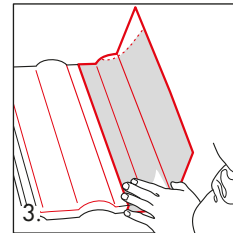
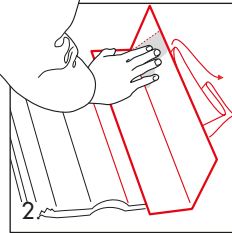
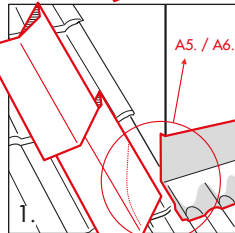
$\alpha \geq 22^\circ$	$\geq 120 \text{ mm}$	$\geq 80 \text{ mm}$
$\alpha < 22^\circ$	$\geq 120 \text{ mm}$	$\geq 100 \text{ mm}$
$\alpha \geq 10^\circ$	$\geq 120 \text{ mm}$	$\geq 150 \text{ mm}$



!

$a > c$

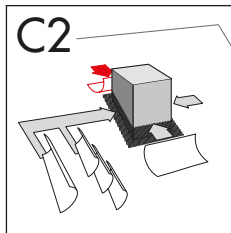
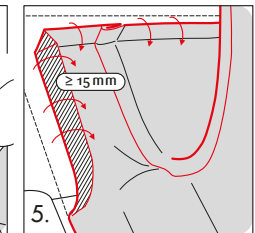
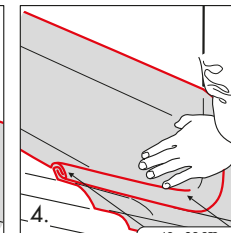
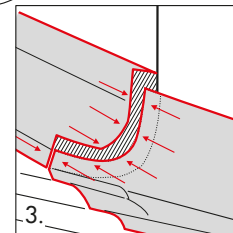
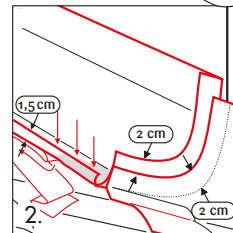
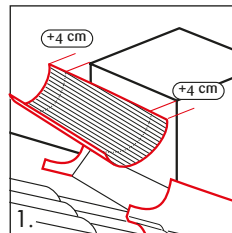
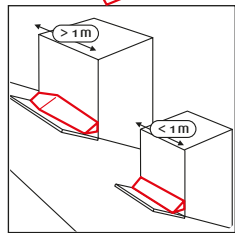
$\alpha \geq 22^\circ$	$\geq 80 \text{ mm}$	$\geq 80 \text{ mm}$
$\alpha < 22^\circ$	$\geq 80 \text{ mm}$	$\geq 100 \text{ mm}$
$\alpha \geq 10^\circ$	$\geq 80 \text{ mm}$	$\geq 150 \text{ mm}$



!

a b

$\alpha \geq 22^\circ$	$\geq 100 \text{ mm}$	$\geq 150 \text{ mm}$
$\alpha < 22^\circ$	$\geq 150 \text{ mm}$	$\geq 150 \text{ mm}$
$\alpha < 15^\circ$	$\geq 200 \text{ mm}$	$\geq 150 \text{ mm}$
$\alpha \geq 10^\circ$	$\geq 200 \text{ mm}$	$\geq 150 \text{ mm}$



!

a b

$\alpha \geq 22^\circ$	$\geq 100 \text{ mm}$	$\geq 150 \text{ mm}$
$\alpha < 22^\circ$	$\geq 150 \text{ mm}$	$\geq 150 \text{ mm}$
$\alpha < 15^\circ$	$\geq 200 \text{ mm}$	$\geq 150 \text{ mm}$
$\alpha \geq 10^\circ$	$\geq 200 \text{ mm}$	$\geq 150 \text{ mm}$

