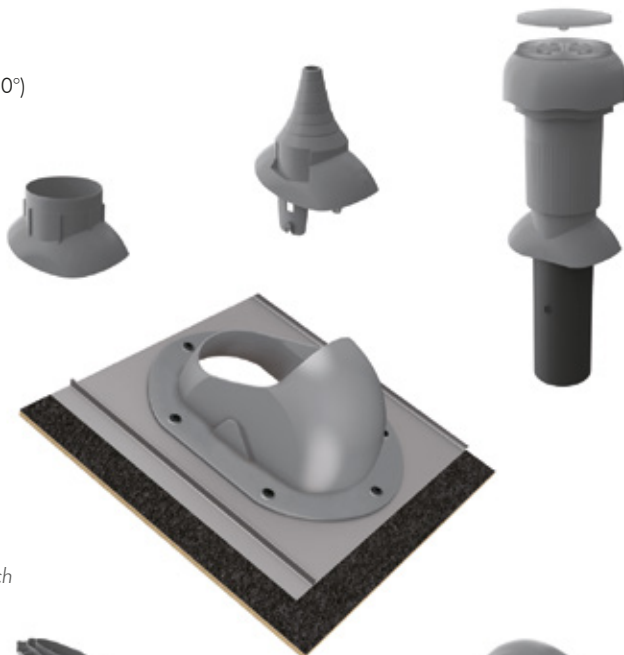


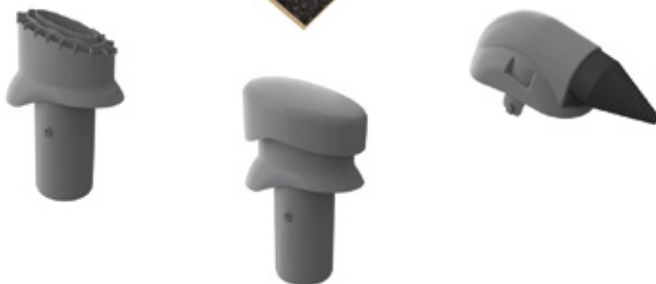
Produkte dachneigungsabhängig
(für Dachneigungsbereiche von 20° - 50°)

*Products depending from the roof pitch
(for roof pitches from 20° - 50°)*



Produkte dachneigungsunabhängig
(für Dachneigungsbereiche von $\geq 3^\circ$)

*Products independent from the roof pitch
(for roof pitches from $\geq 3^\circ$)*



Venduct Dachdurchgang für Stehfalzdeckungen

Venduct roof outlet for standing seam profiles

Verlegeanleitung
Installation instructions

BMI Deutschland GmbH
Frankfurter Landstraße 2-4
61440 Oberursel
Germany
www.kloeber.de
Kundenservice
Tel. +49 (0)6104 8010 1700
info.kloeber@bmigroup.com
Technische Beratung
Tel. +49 (0)6104 8010 3400
awt.beratung.de@bmigroup.com

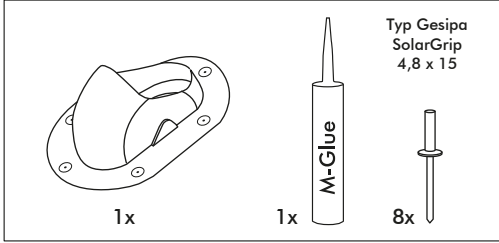
KLOEBER

DE Venduct Dachdurchgang für Stehfalzdeckungen

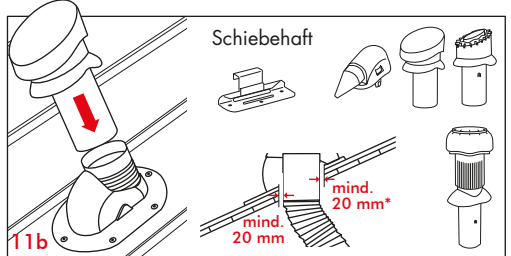
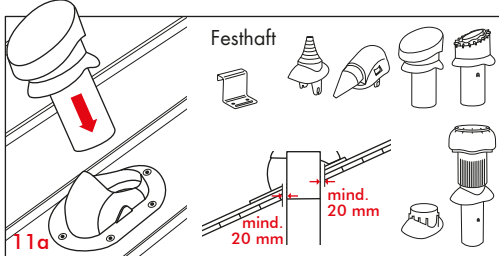
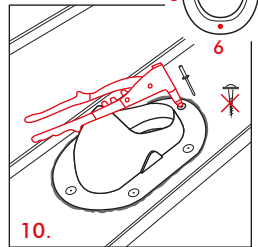
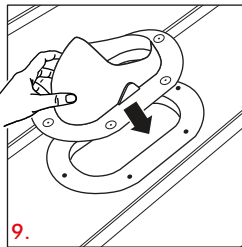
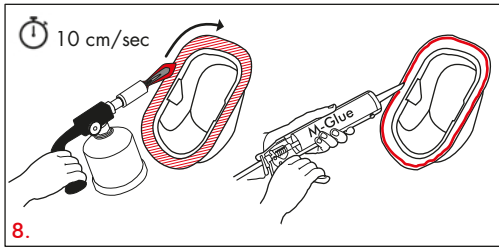
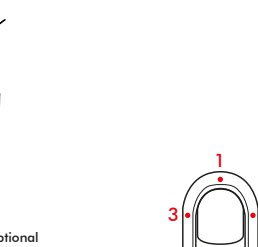
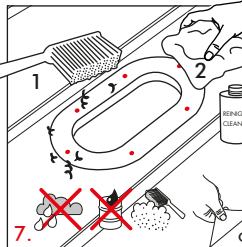
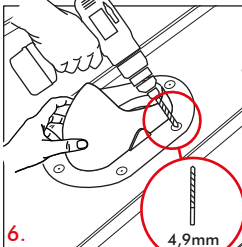
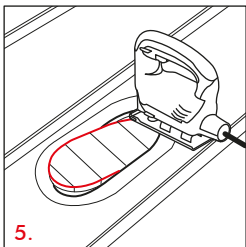
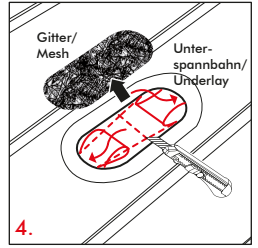
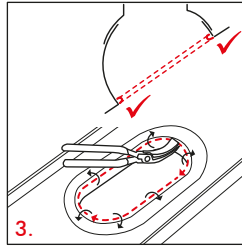
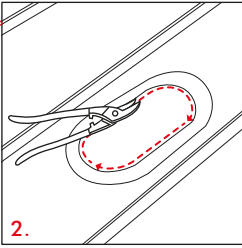
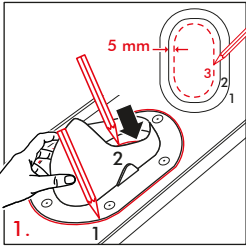
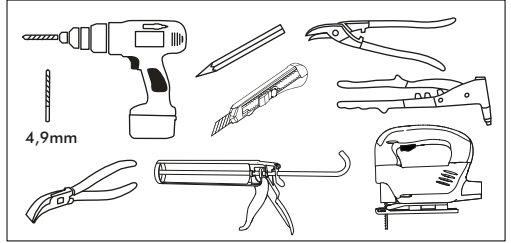
EN Venduct roof outlet for standing seam profiles



TEILE / COMPONENTS



WERKZEUG / TOOLS



*Thermische Längenänderung berücksichtigen