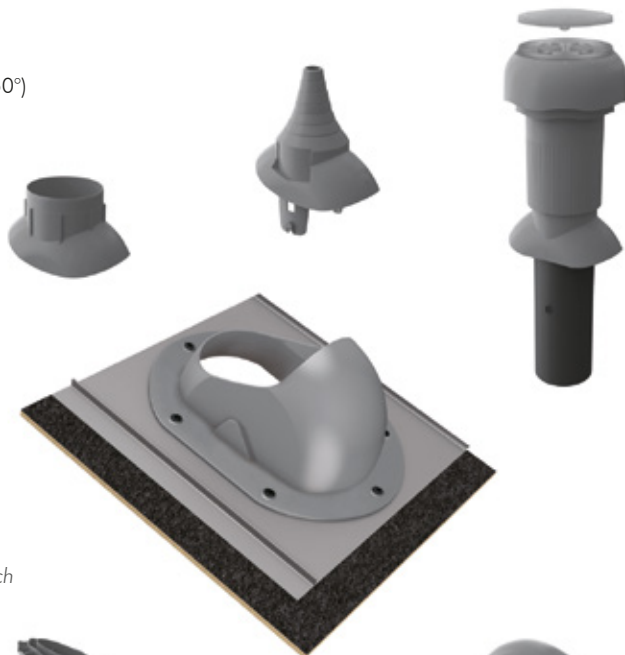


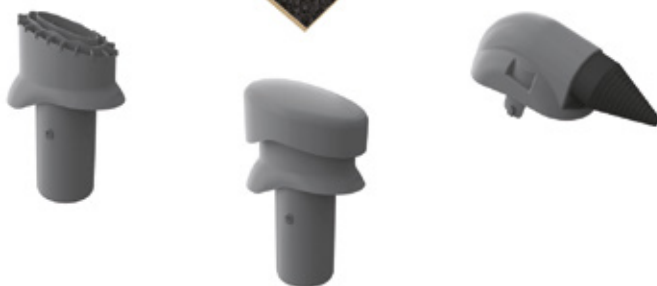
Produkte dachneigungsabhängig
(für Dachneigungsbereiche von 20° - 50°)

*Products depending from the roof pitch
(for roof pitches from 20° - 50°)*



Produkte dachneigungsunabhängig
(für Dachneigungsbereiche von $\geq 3^\circ$)

*Products independent from the roof pitch
(for roof pitches from $\geq 3^\circ$)*



Venduct Dachdurchgang für Stehfalzdeckungen

Venduct roof outlet for standing seam profiles

Verlegeanleitung
Installation instructions

Klöber GmbH
Scharpenberger Str. 72-90
58256 Ennepetal
Germany
Tel. +49 (0)23 33/98 77-0
Fax +49 (0)23 33/98 77-199
Hotline +49 (0)23 33/98 77-164
www.kloeber.de
info@kloeber.de

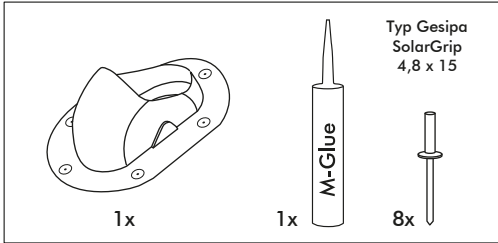
KLÖBER

DE Venduct Dachdurchgang für Stehfalzdeckungen

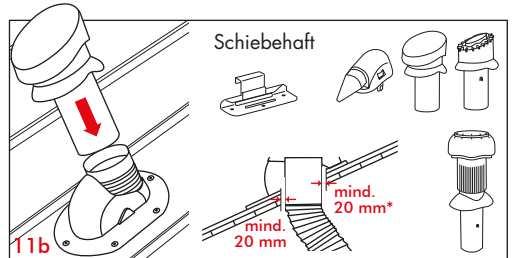
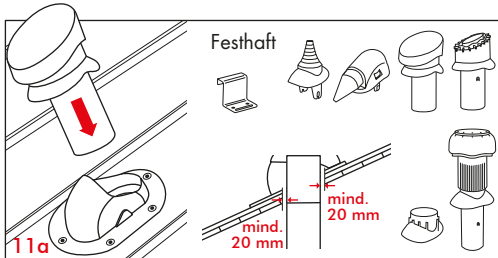
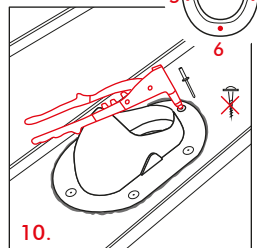
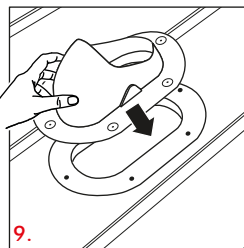
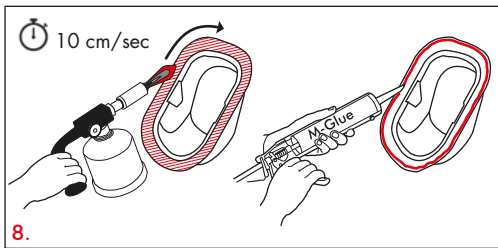
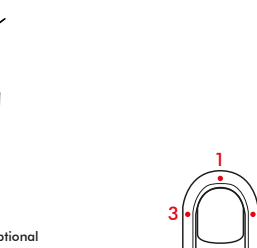
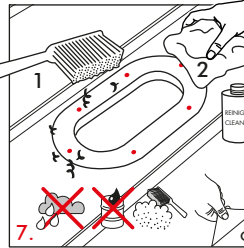
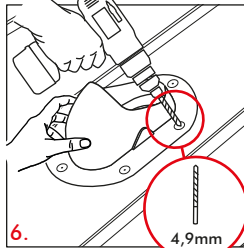
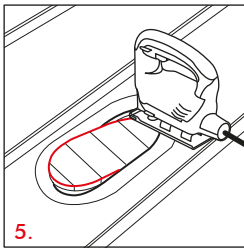
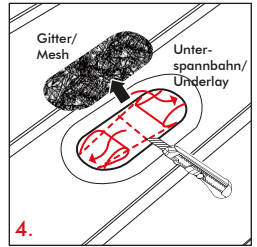
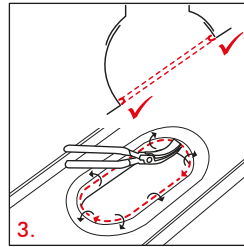
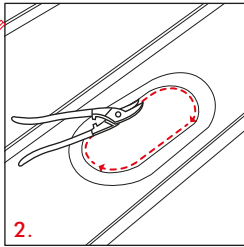
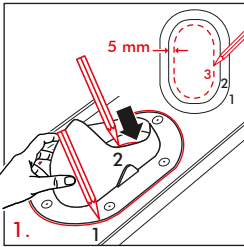
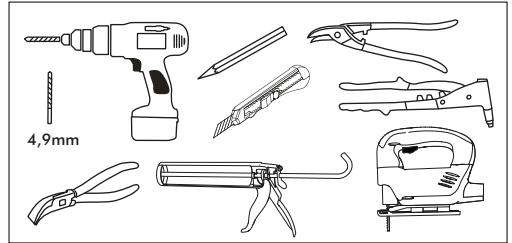
EN Venduct roof outlet for standing seam profiles



TEILE / COMPONENTS



WERKZEUG / TOOLS



*Thermische Längenänderung berücksichtigen